

## River Glyn 8664 : Details

**AS LOW AS \$250**  
**FULLY CUSTOMIZABLE &**  
**PROFESSIONALLY DESIGNED**

<b>Style</b>	Contemporary
<b>Exterior Material</b>	Stone & Stucco
<b>Bedrooms</b>	5
<b>Bathrooms</b>	5 / 2
<b>Total Living Sq Ft</b>	8,664
<b>Total Covered Sq Ft</b>	10,398
<b>Dimensions (w x d x h)</b>	126' 9" x 66' 8" x 32' 0"

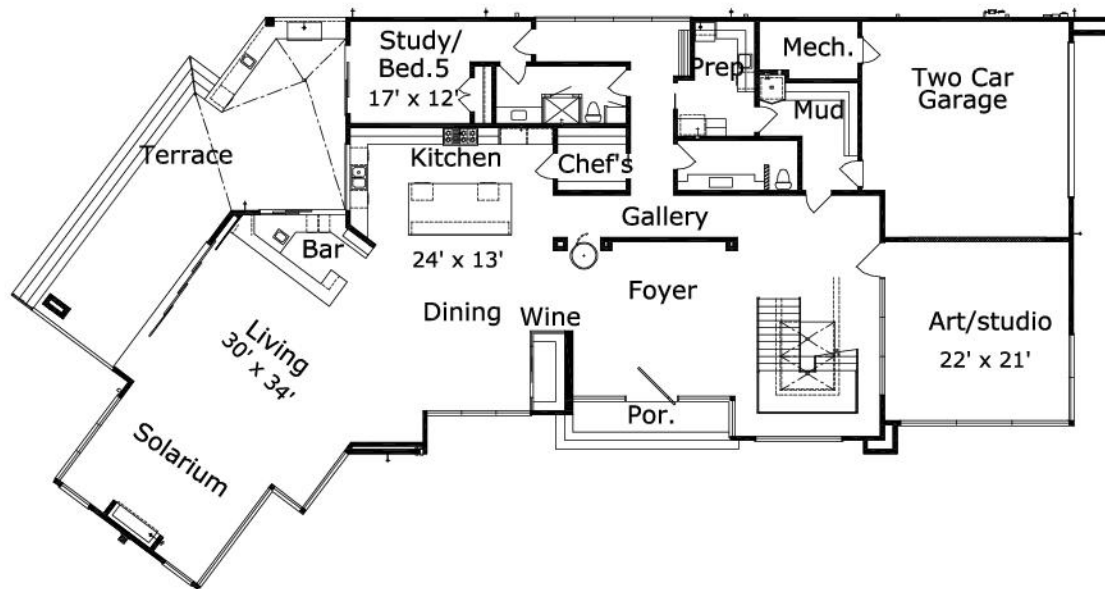
	First Floor	Other Floors	Other Features	
<b>Square Footage</b>	4,346	4,318	Cov'd. Terrace	Elevator
<b>Master Bedroom</b>		X	Ext. Balcony	Foyer
<b>Dining Room</b>	X		Gallery	Gameroom
<b>Living Room</b>	X		Int. Balcony	Master Down
<b>Family Room</b>	X		Mud Entry	Outdoor Kitchen
<b>Game Room</b>		X	Sauna	Wine Closet
<b>Study</b>	X			
<b>Guest Room</b>	X			

<b>Garage(s)</b>	2 car, Side Load, Swing (Side Facing)
<b>Stairs</b>	Standard

## River Glyn 8664 : Front Elevation



## River Glyn 8664 : Floor 1



## River Glyn 8664 : Floor 2

