

## St. Enclave 2150 : Details

**AS LOW AS \$250**  
**FULLY CUSTOMIZABLE &**  
**PROFESSIONALLY DESIGNED**

<b>Style</b>	Transitional
<b>Exterior Material</b>	Siding
<b>Bedrooms</b>	3
<b>Bathrooms</b>	3 / 1
<b>Total Living Sq Ft</b>	2,150
<b>Total Covered Sq Ft</b>	2,645
<b>Dimensions (w x d x h)</b>	41' 0" x 21' 0" x 41' 9"

	First Floor	Other Floors	Other Features	
--	-------------	--------------	----------------	--

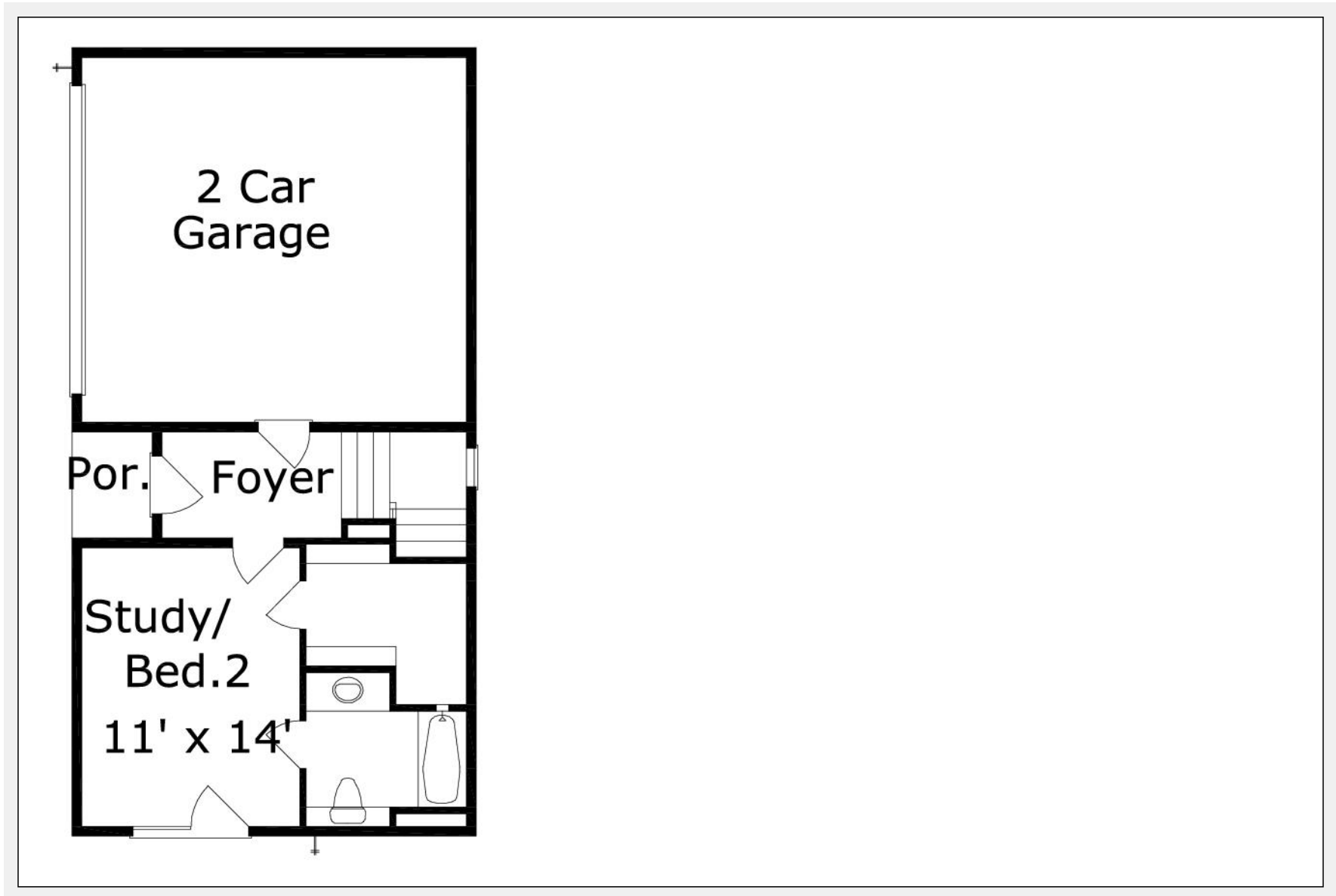
<b>Square Footage</b>	427	1,723	Ext. Balcony	Foyer
<b>Master Bedroom</b>		X		

<b>Garage(s)</b>	2 car, Front Load, Straight In
<b>Stairs</b>	

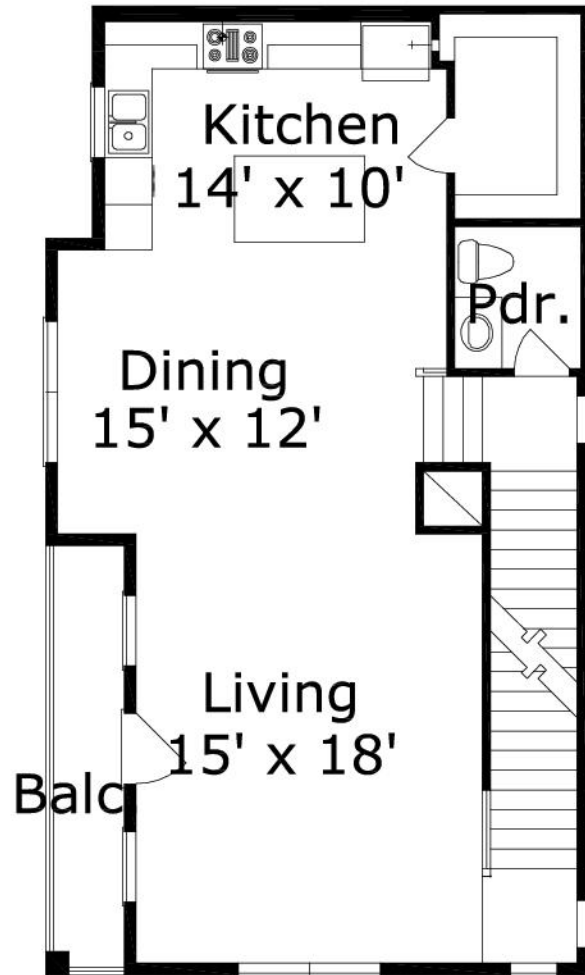
## St. Enclave 2150 : Front Elevation



## St. Enclave 2150 : Floor 1



## St. Enclave 2150 : Floor 2



## St. Enclave 2150 : Floor 3

