

## Neeley 5204 : Details

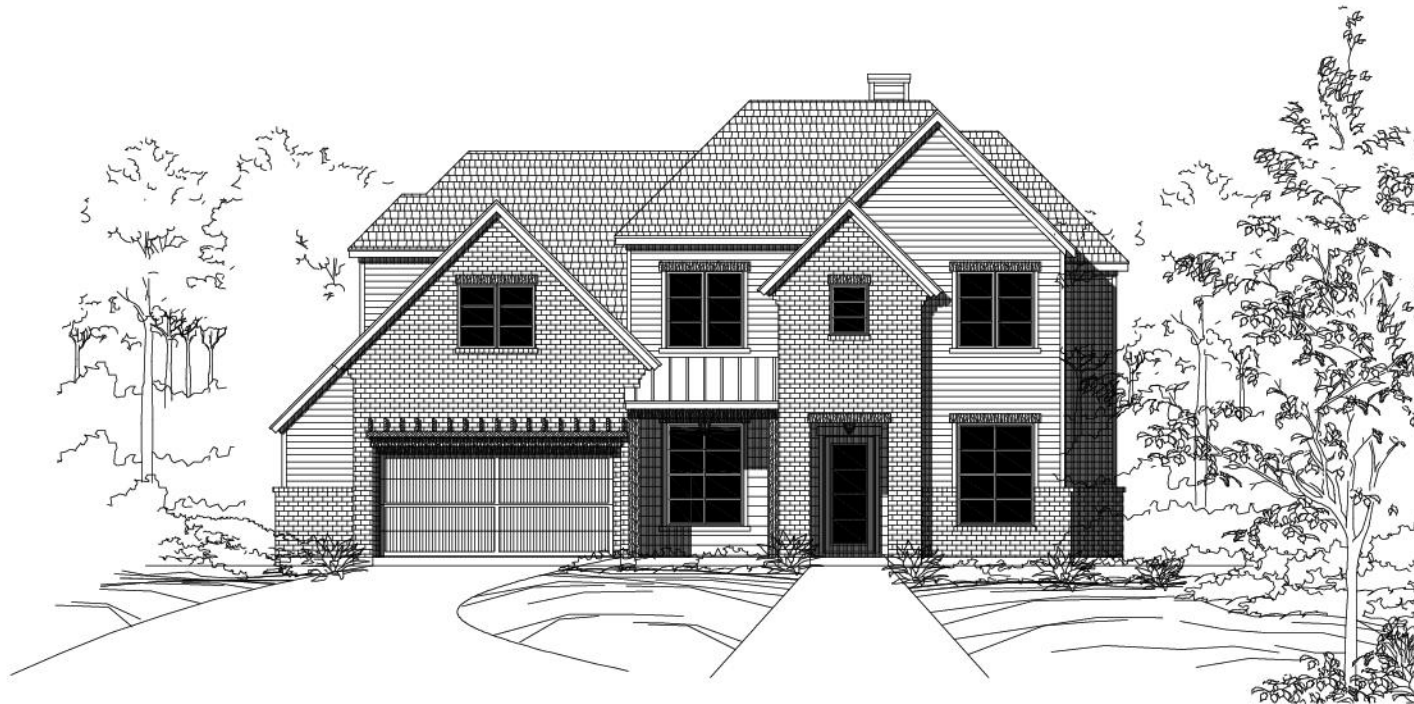
**AS LOW AS \$250**  
**FULLY CUSTOMIZABLE &**  
**PROFESSIONALLY DESIGNED**

<b>Style</b>	Transitional
<b>Exterior Material</b>	Brick & Siding
<b>Bedrooms</b>	5
<b>Bathrooms</b>	5 / 1
<b>Total Living Sq Ft</b>	5,204
<b>Total Covered Sq Ft</b>	6,537
<b>Dimensions (w x d x h)</b>	65' 2" x 71' 0" x 36' 2"

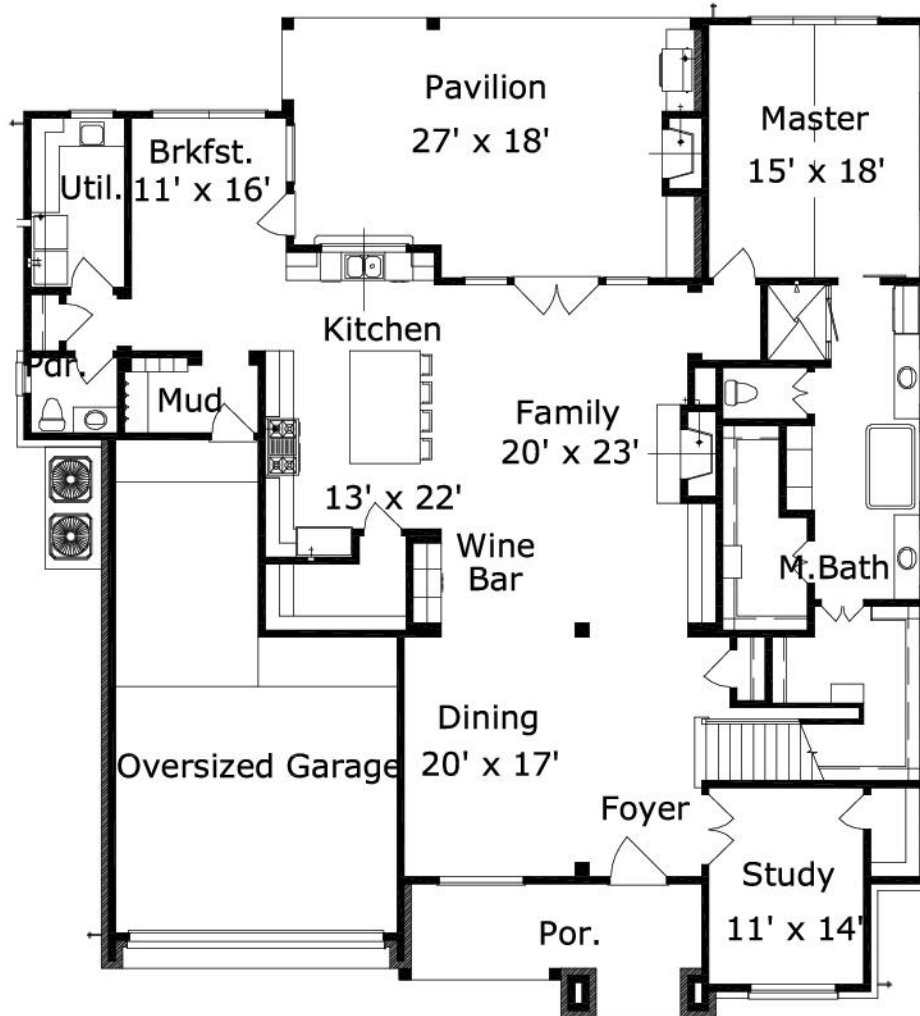
	First Floor	Other Floors	Other Features	
<b>Square Footage</b>	2,733	2,471	Bar	Bonus Room
<b>Master Bedroom</b>	X		Cov'd. Pavilion	Foyer
<b>Game Room</b>		X	Gameroom	Int. Balcony
<b>Home Theater</b>		X	Media	Mud Room
			Wine Bar	

**Garage(s)** 3 car, Front Load, Straight In  
**Stairs**

## Neeley 5204 : Front Elevation



## Neeley 5204 : Floor 1



## Neeley 5204 : Floor 2

