

## Abbydale 3679.2 : Details

**AS LOW AS \$250**  
**FULLY CUSTOMIZABLE &**  
**PROFESSIONALLY DESIGNED**

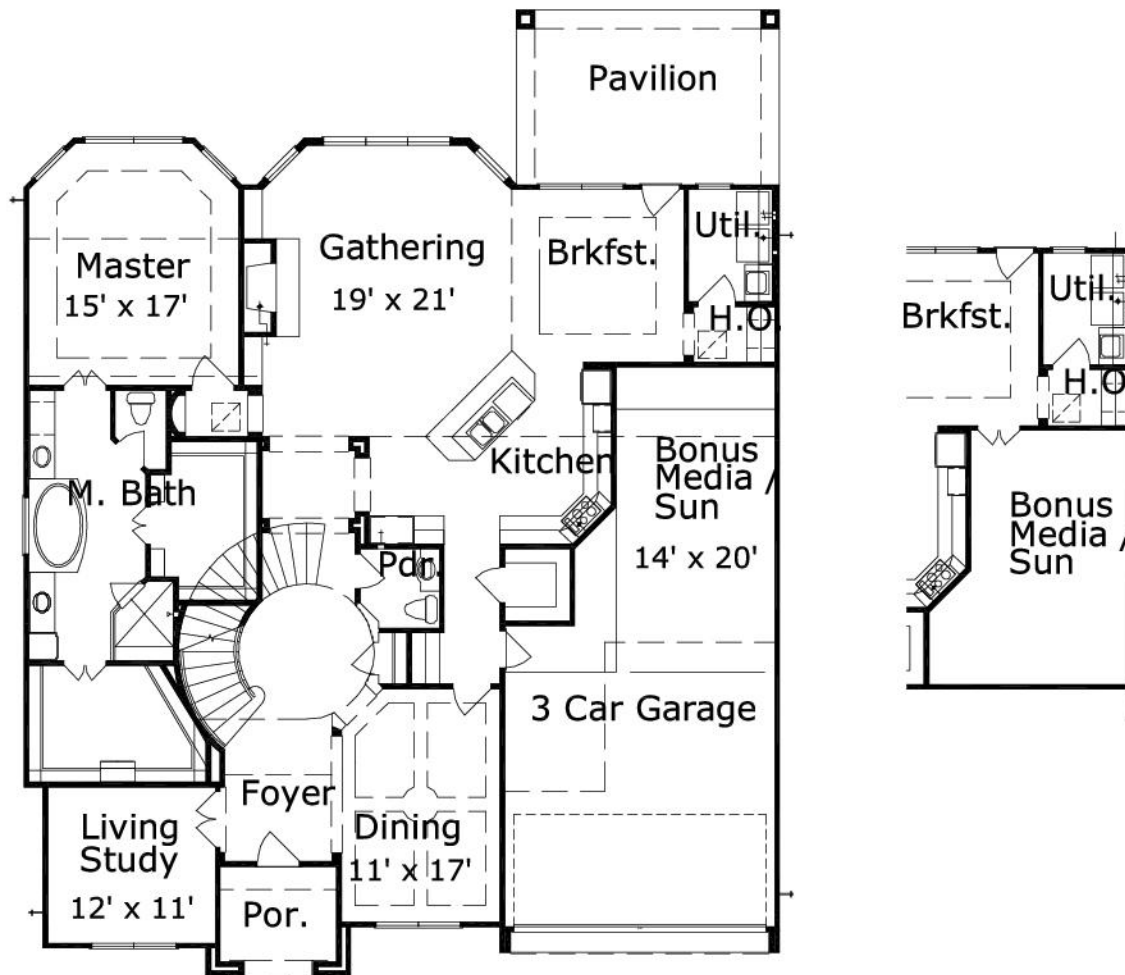
<b>Style</b>	Traditional
<b>Exterior Material</b>	Stucco
<b>Bedrooms</b>	4
<b>Bathrooms</b>	3 / 1
<b>Total Living Sq Ft</b>	3,679
<b>Total Covered Sq Ft</b>	5,633
<b>Dimensions (w x d x h)</b>	54' 0" x 67' 0" x 33' 9"

	First Floor	Other Floors	Other Features	
<b>Square Footage</b>	2,265	1,414	Cov'd. Front Porch	Foyer
<b>Master Bedroom</b>	X		Master Down	Sunroom
<b>Living Room</b>	X			
<b>Study</b>	X			
<b>Garage(s)</b>	3 car, Front Load, Straight In			
<b>Stairs</b>	Curved			

## Abbydale 3679.2 : Front Elevation



## Abbydale 3679.2 : Floor 1



## Abbydale 3679.2 : Floor 2

