

## Arpege 3743: Details

**AS LOW AS \$250**  
**FULLY CUSTOMIZABLE &**  
**PROFESSIONALLY DESIGNED**

<b>Style</b>	Traditional
<b>Exterior Materials</b>	Brick & Stucco
<b>Bedrooms</b>	7
<b>Bathrooms</b>	4 / 1
<b>Total Living Sq Ft</b>	3,743
<b>Total Covered Sq Ft</b>	4,886
<b>Dimensions (w x d x h)</b>	59'11" x 60'1" x 32'8"

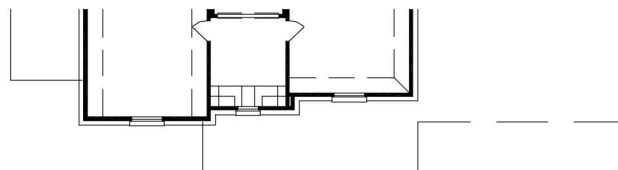
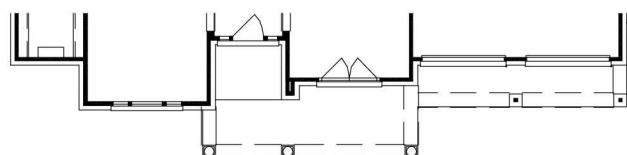
	First Floor	Other Floors	Other Features
<b>Square Footage</b>	2,309	1,434	Art Niche Two-story Covered Rear Porch
<b>Bedrooms</b>	2	5	Covered Front Porch
<b>Ceiling Heights</b>	9'0"	8'0"	Covered Rear Porch
<b>Master Bedroom</b>	X		Covered Side Porch
<b>Dining Room</b>	X		Exercise Room
<b>Living Room</b>	X		Exterior Balcony
<b>Family Room</b>	X		Foyer
<b>Game Room</b>		X	Hobby Room
<b>Study</b>	X		Interior Balcony
<b>Guest Room</b>		X	Sunroom
			Two Story Family Room

<b>Garage(s)</b>	Front Load Straight In
<b>Stairs</b>	Curved

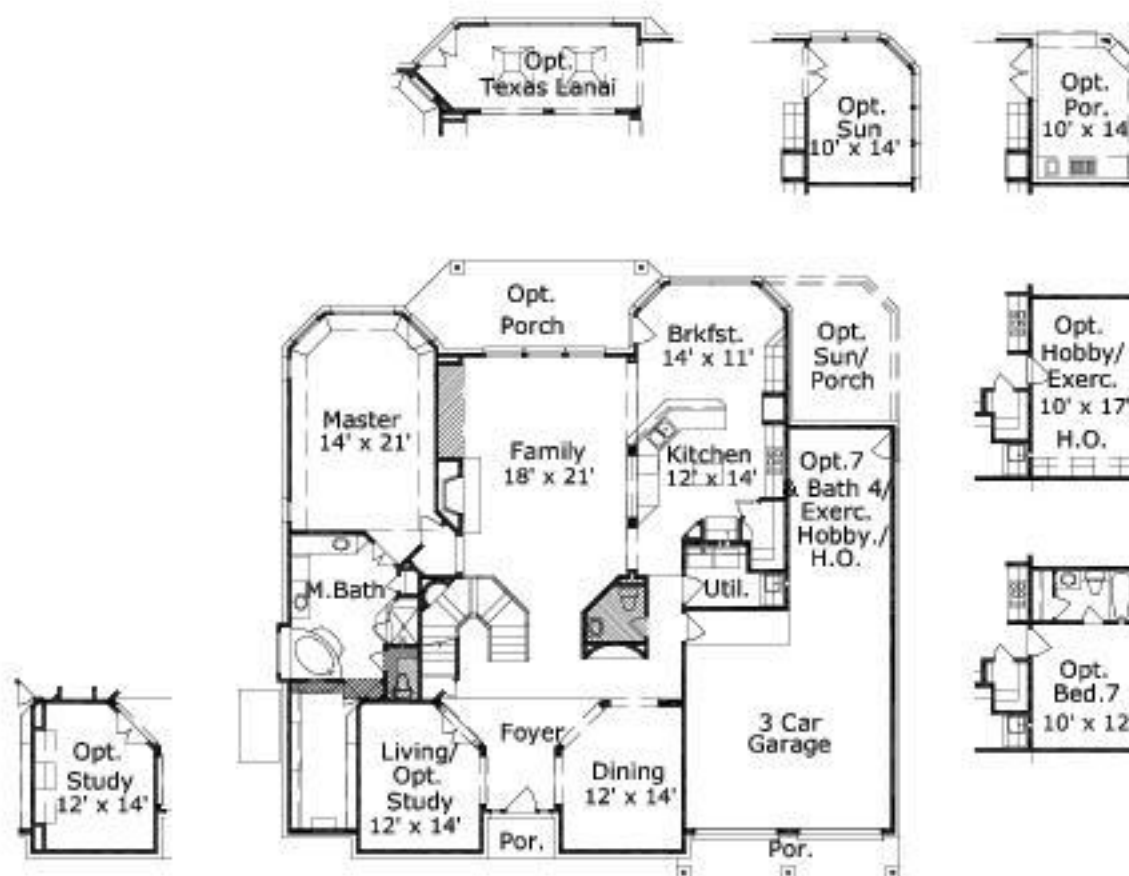
### Notes

The 177 sq. ft. covered patio/texas lanai footage and the 196 sq. ft. attic storage footage is not included in the living area square footage.

## Arpege 3743: Front Elevation



## Arpege 3743: Floor 1



## Arpege 3743: Floor 2

