

## Delano 7910: Details

<b>Style</b>	French
<b>Exterior Materials</b>	Stucco
<b>Bedrooms</b>	6
<b>Bathrooms</b>	7 / 1
<b>Total Living Sq Ft</b>	7,910
<b>Total Covered Sq Ft</b>	15,627
<b>Dimensions (w x d x h)</b>	128'8" x 127'4" x 34'8"

**AS LOW AS \$250**  
**FULLY CUSTOMIZABLE &**  
**PROFESSIONALLY DESIGNED**

	First Floor	Other Floors	Other Features	
<b>Square Footage</b>	5,020	2,890	Breezeway	Interior Balcony
<b>Bedrooms</b>	2	4	Butler Pantry	Loggia
<b>Ceiling Heights</b>	11'0"	10'0"	Cabana Bath	Motor Court
<b>Master Bedroom</b>	X		Cedar Closet	Playroom
<b>Dining Room</b>	X		Christmas Storage	Porte Cochere
<b>Living Room</b>	X		Conservatory	Prayer Room
<b>Family Room</b>	X		Covered Terrace	Quarters
<b>Game Room</b>		X	Exercise Room	Separate Master Closet
<b>Study</b>	X		Exterior Balcony	Terrace
<b>Guest Room</b>	X		Foyer	Unfinished Storage
			Gallery	
<b>Garage(s)</b>	Front Load Swing (Entry Facing)			
<b>Stairs</b>	Split (3 flights)			

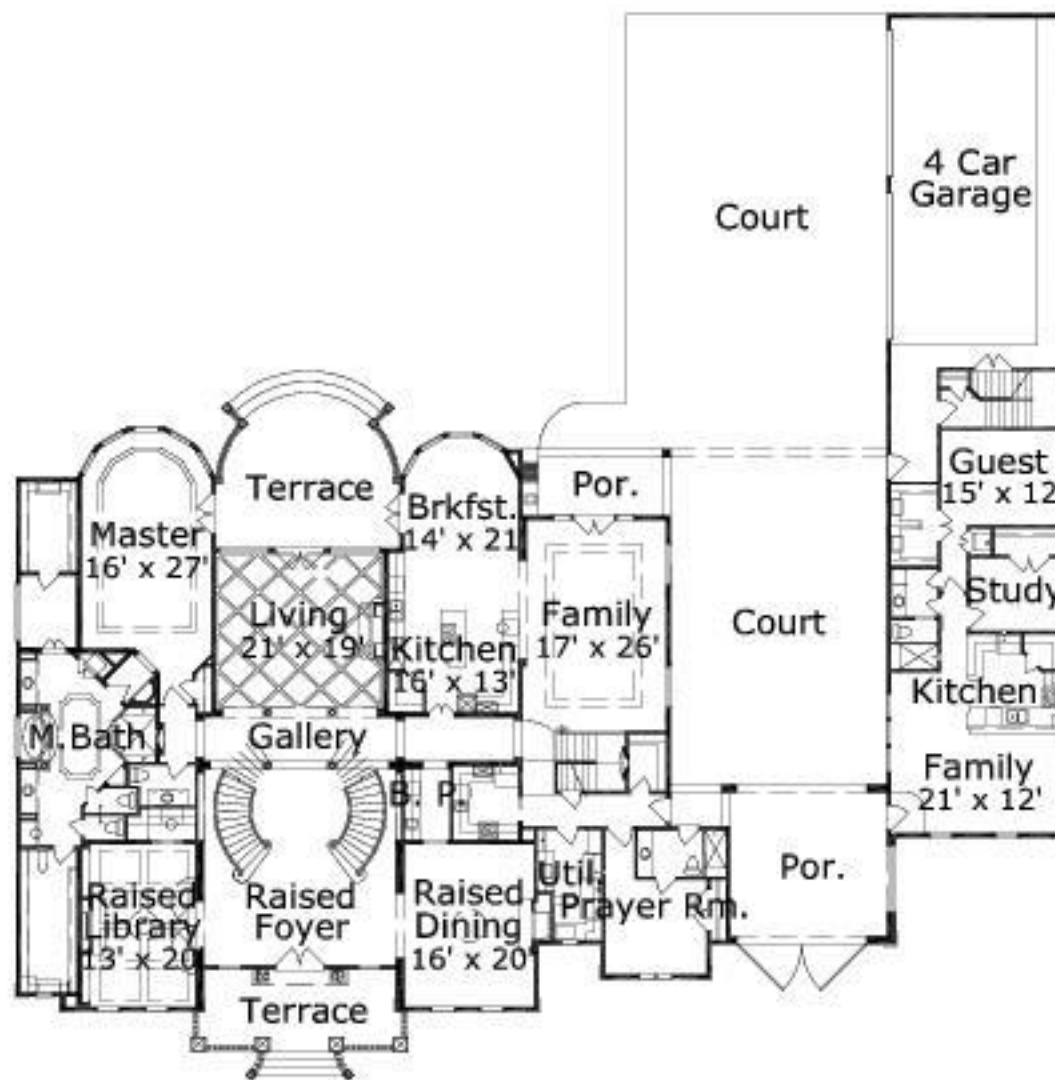
### Notes

The living area of this plan does not include the guest suite or the future quarters. The additional square footage for the guest suite (which includes the adjacent study, bath, kitchen, breakfast and family room) is 1,044 square feet. The additional square footage for the future quarters is 492 square feet.

## Delano 7910: Front Elevation



## Delano 7910: Floor 1



## Delano 7910: Floor 2

