

## Powder River 6475: Details

**AS LOW AS \$250**  
**FULLY CUSTOMIZABLE &**  
**PROFESSIONALLY DESIGNED**

<b>Style</b>	Tuscan
<b>Exterior Materials</b>	Stucco
<b>Bedrooms</b>	4
<b>Bathrooms</b>	5 / 2
<b>Total Living Sq Ft</b>	6,475
<b>Total Covered Sq Ft</b>	9,653
<b>Dimensions (w x d x h)</b>	69'8" x 102'7" x 45'6"

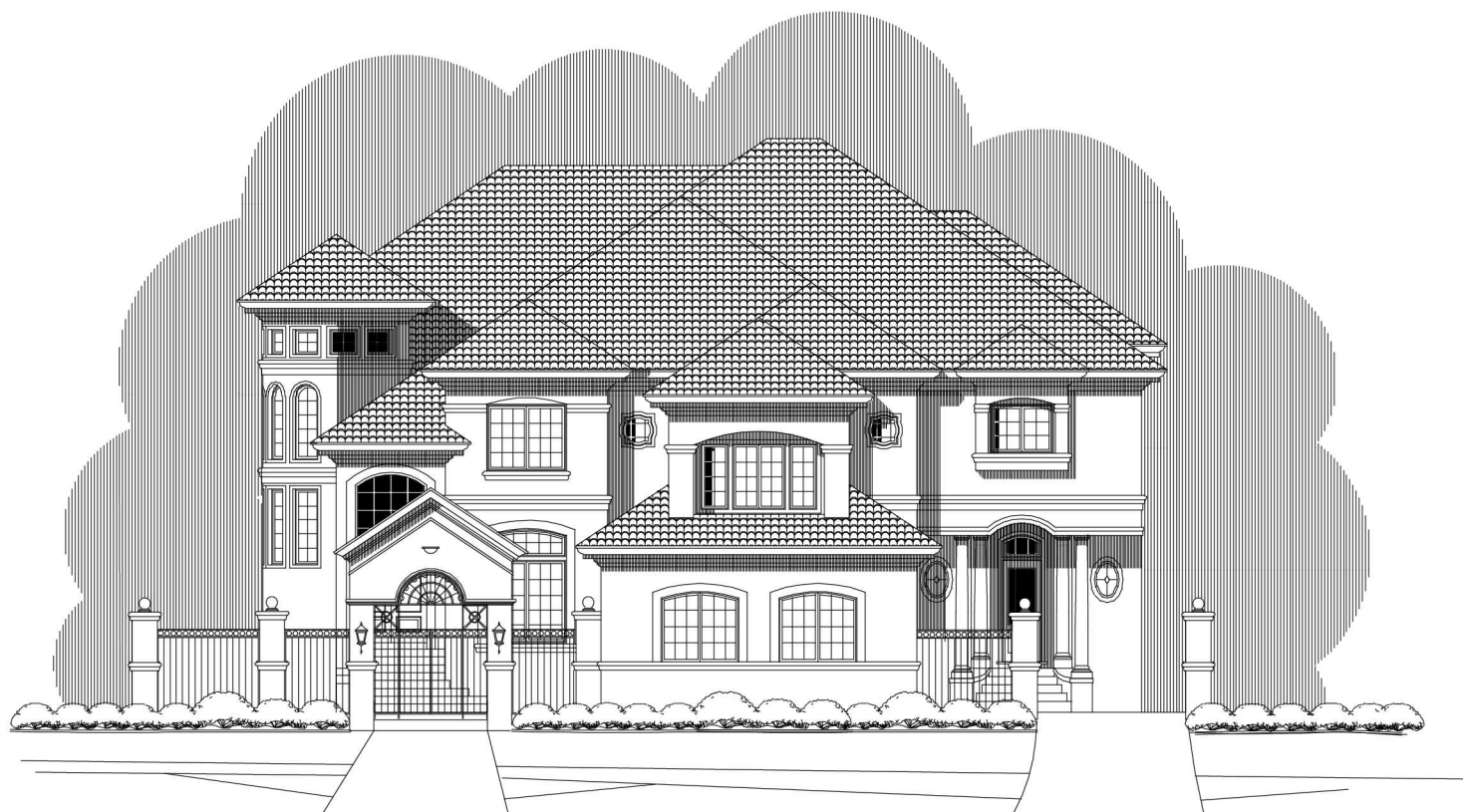
	First Floor	Other Floors	Other Features
<b>Square Footage</b>	3,280	3,195	Bar
<b>Bedrooms</b>	0	4	Covered Terrace
<b>Ceiling Heights</b>	12'0"	10'0"	Foyer
<b>Master Bedroom</b>		X	Gallery
<b>Dining Room</b>	X		Interior Balcony
<b>Living Room</b>	X		Optional Elevator
<b>Family Room</b>	X		Portico
<b>Study</b>	X		Quarters
<b>Guest Room</b>		X	Separate Master Closet
			Texas Basement
			Wine Room

<b>Garage(s)</b>	Side Load Swing (Entry Facing)
<b>Stairs</b>	Curved (4 flights)

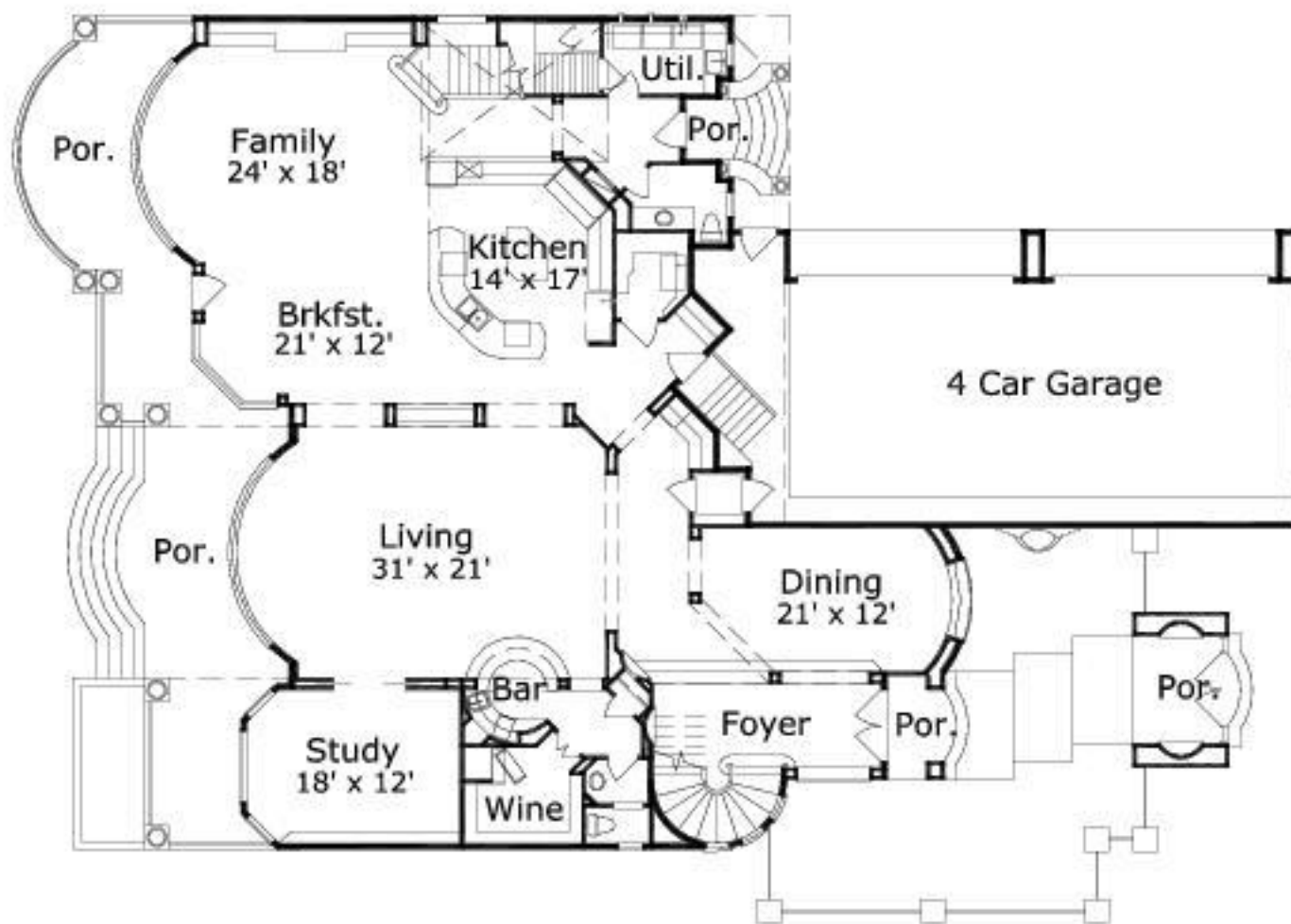
### Notes

The living area square footage of this plan does not include the quarters or the tornado shelter. The additional square footage for the quarters is 525 square feet, and the additional square footage for the tornado shelter is 193 square feet.

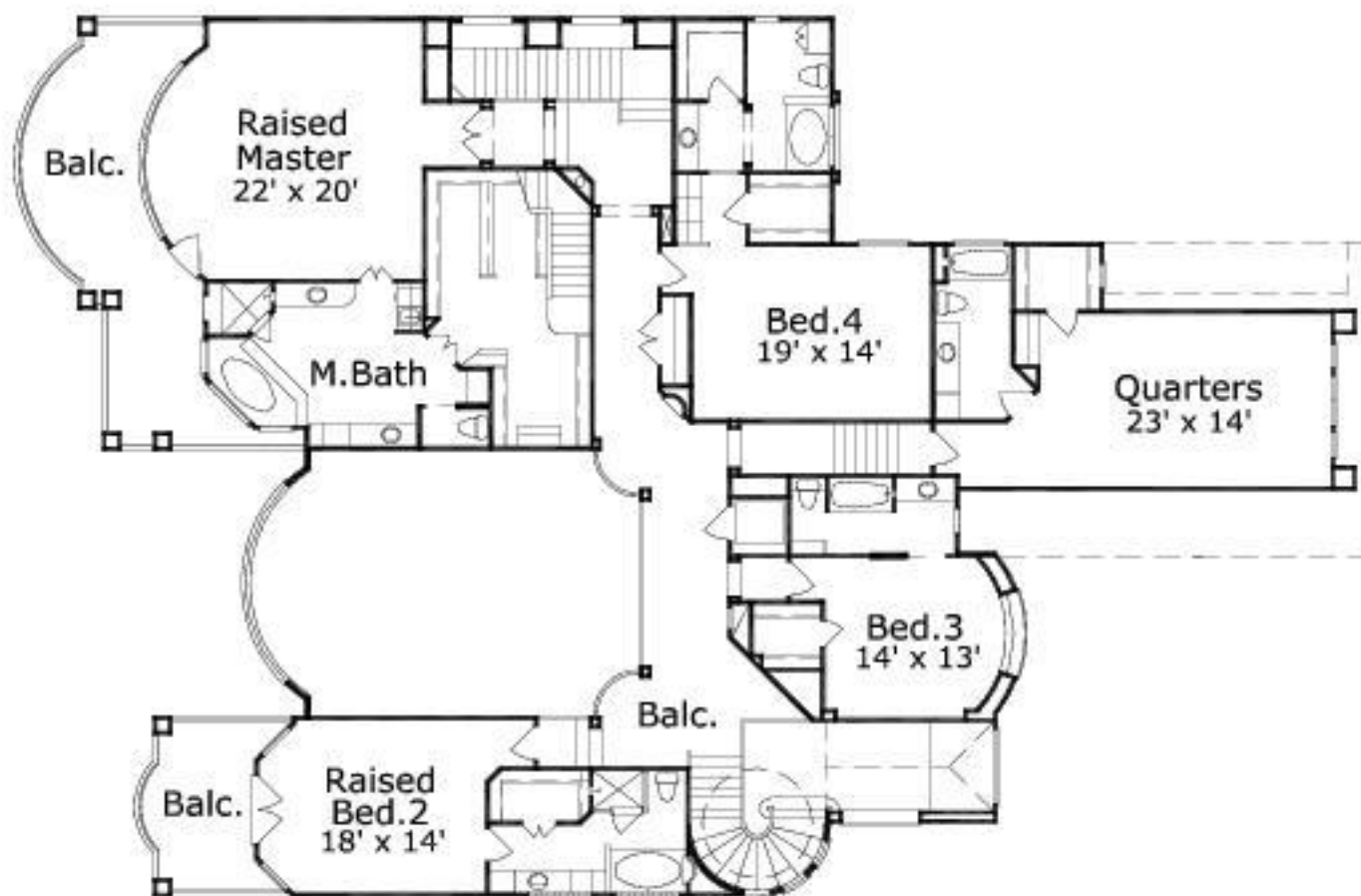
## Powder River 6475: Front Elevation



## Powder River 6475: Floor 1



## Powder River 6475: Floor 2



## Powder River 6475: Floor 3

