

Barmont 2362: Details

AS LOW AS \$250
FULLY CUSTOMIZABLE &
PROFESSIONALLY DESIGNED

Style	Duplex/Townhouse
Exterior Materials	Stucco
Bedrooms	3
Bathrooms	3 / 1
Total Living Sq Ft	2,362
Total Covered Sq Ft	2,986
Dimensions (w x d x h)	40'0" x 52'10" x 42'9"

	First Floor	Other Floors	Other Features
Square Footage	490	1,872	Covered Rear Porch
Bedrooms	1	2	Covered Side Porch
Ceiling Heights	9'0"	10'0"	Exterior Balcony
Master Bedroom		X	Foyer
Dining Room		X	
Living Room		X	
Family Room		X	
Study	X		
Guest Room	X		

Garage(s) Front Load Straight In
Stairs Standard (2 flights)

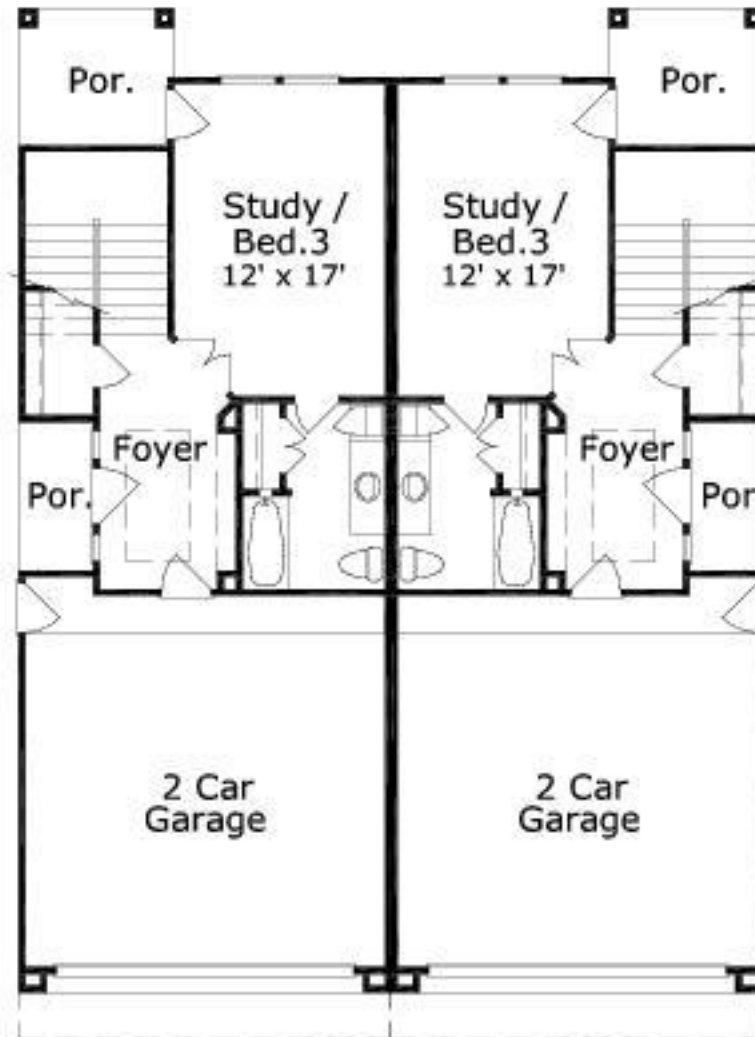
Notes

The living & total covered area square footages listed are per each unit.

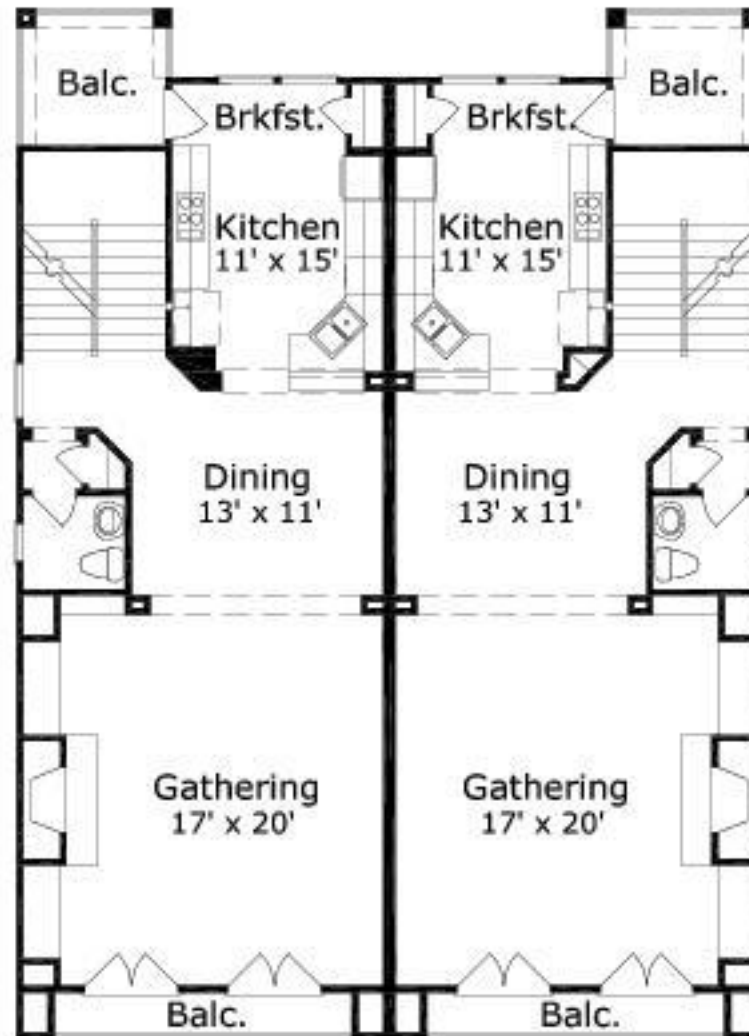
Barmont 2362: Front Elevation



Barmont 2362: Floor 1



Barmont 2362: Floor 2



Barmont 2362: Floor 3

