

## Brantley 4860: Details

**AS LOW AS \$250**  
**FULLY CUSTOMIZABLE &**  
**PROFESSIONALLY DESIGNED**

<b>Style</b>	Country French
<b>Exterior Materials</b>	Brick
<b>Bedrooms</b>	5
<b>Bathrooms</b>	3 / 2
<b>Total Living Sq Ft</b>	4,860
<b>Total Covered Sq Ft</b>	6,449
<b>Dimensions (w x d x h)</b>	89'0" x 65'4" x 34'11"

	First Floor	Other Floors	Other Features
<b>Square Footage</b>	3,251	1,609	Butler Pantry
<b>Bedrooms</b>	1	4	Cabana Bath
<b>Ceiling Heights</b>	10'0"	9'0"	Covered Rear Porch
<b>Master Bedroom</b>	X		Exterior Balcony
<b>Dining Room</b>	X		Foyer
<b>Living Room</b>	X		Gallery
<b>Family Room</b>	X		Interior Balcony
<b>Game Room</b>		X	Playroom
<b>Study</b>	X		
<b>Guest Room</b>		X	

<b>Garage(s)</b>	Front Load Straight In
<b>Stairs</b>	Spiral (2 flights)

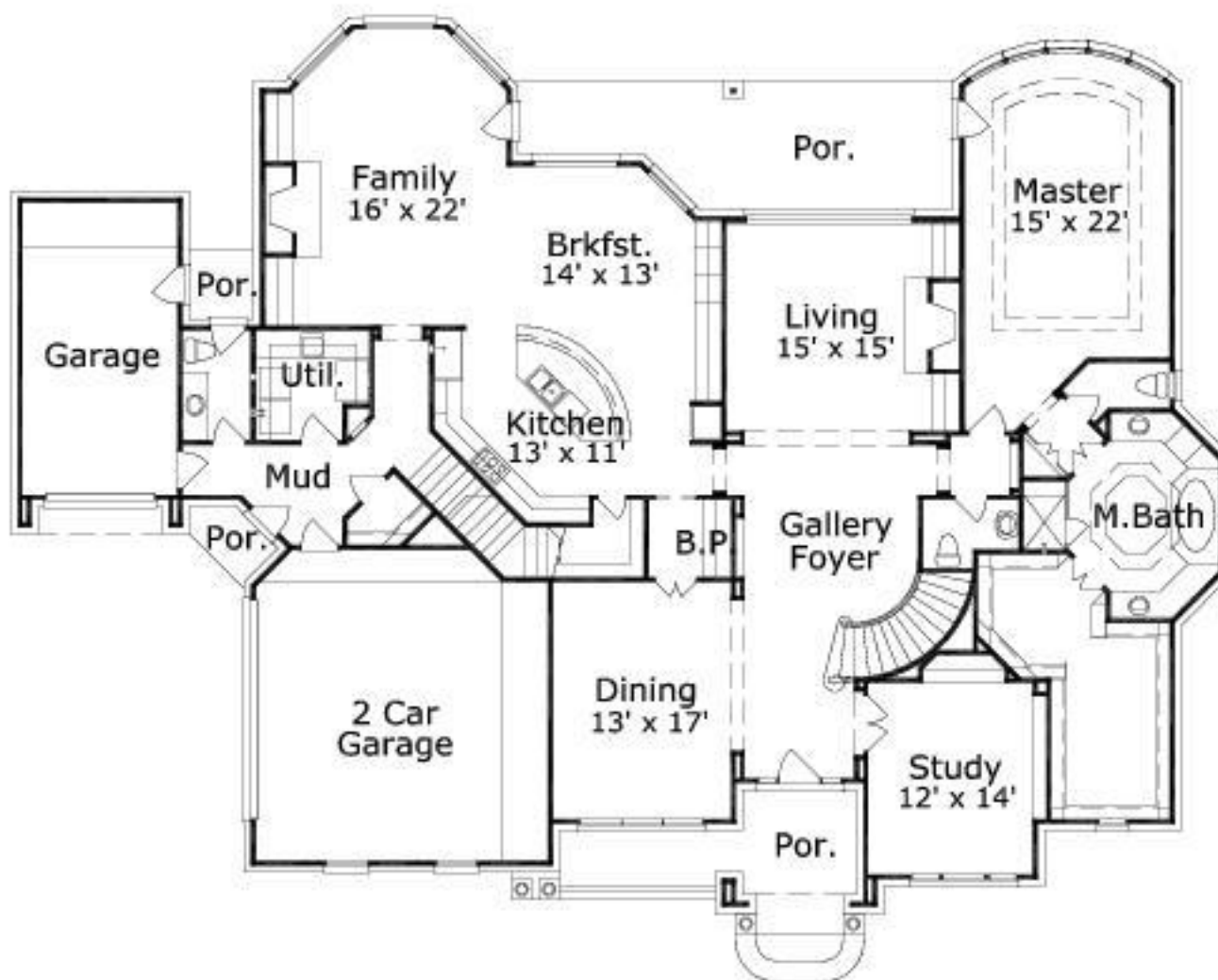
### Notes

Bedroom 5 is a future/bonus space which if completed will add an additional 306 sq.ft to the living area.

## Brantley 4860: Front Elevation



## Brantley 4860: Floor 1



## Brantley 4860: Floor 2

