

## Davis 4716 : Details

<b>Style</b>	Transitional
<b>Exterior Material</b>	Stone & Siding
<b>Bedrooms</b>	5
<b>Bathrooms</b>	5 / 1
<b>Total Living Sq Ft</b>	4,716
<b>Total Covered Sq Ft</b>	7,464
<b>Dimensions (w x d x h)</b>	80' 0" x 115' 8" x 30' 8"

**AS LOW AS \$250**  
**FULLY CUSTOMIZABLE &**  
**PROFESSIONALLY DESIGNED**

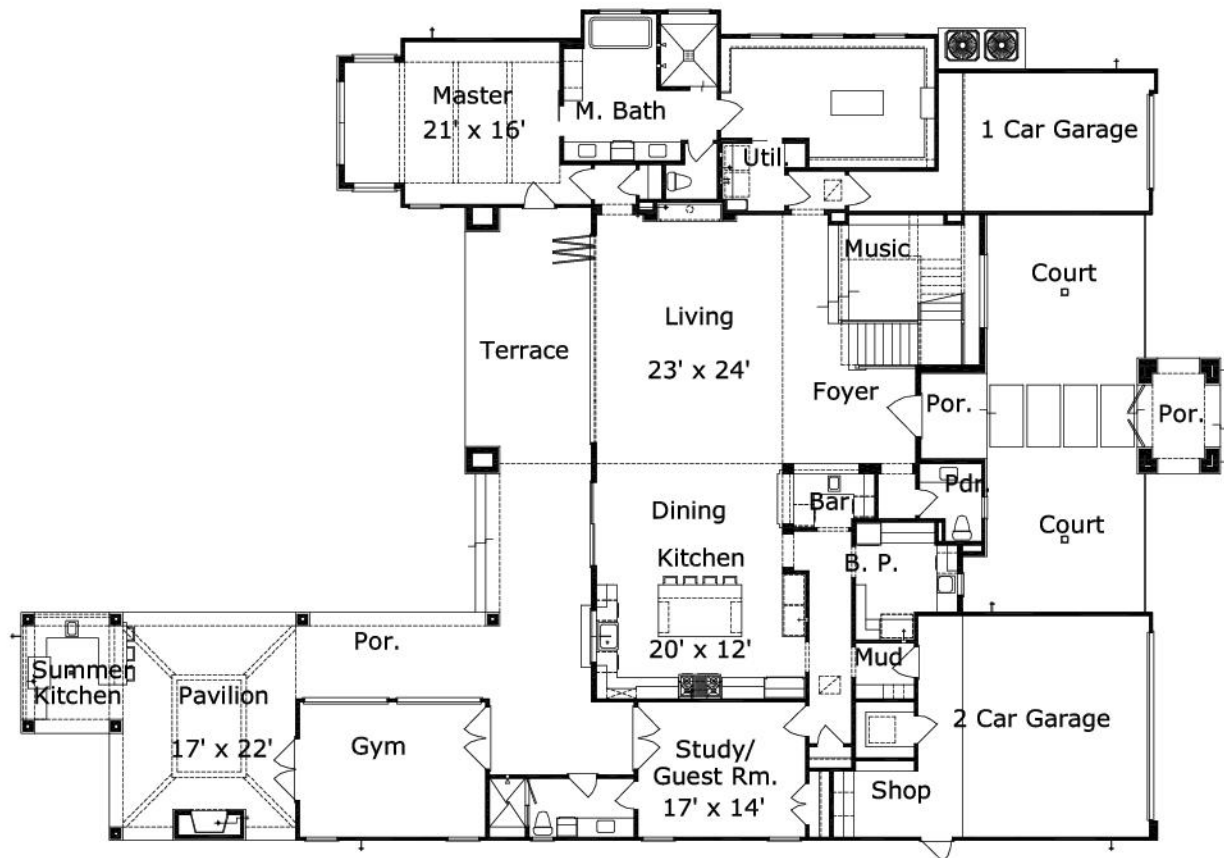
	First Floor	Other Floors	Other Features	
<b>Square Footage</b>	2,992	1,724	Butler Pantry	Courtyard
<b>Master Bedroom</b>	X		Cov'd. Terrace	Foyer
<b>Dining Room</b>	X		Mud Room	
<b>Living Room</b>	X			
<b>Family Room</b>	X			
<b>Game Room</b>		X		
<b>Study</b>	X			
<b>Guest Room</b>	X			

**Garage(s)** 3 car, Front Load, Straight In  
**Stairs**

## Davis 4716 : Front Elevation



## Davis 4716 : Floor 1



## Davis 4716 : Floor 2

