

## Rivers 4473 : Details

<b>Style</b>	Craftsman/Victorian
<b>Exterior Material</b>	Brick
<b>Bedrooms</b>	4
<b>Bathrooms</b>	4 / 1
<b>Total Living Sq Ft</b>	4,473
<b>Total Covered Sq Ft</b>	5,607
<b>Dimensions (w x d x h)</b>	69' 4" x 89' 0" x 28' 11"

**AS LOW AS \$250**  
**FULLY CUSTOMIZABLE &**  
**PROFESSIONALLY DESIGNED**

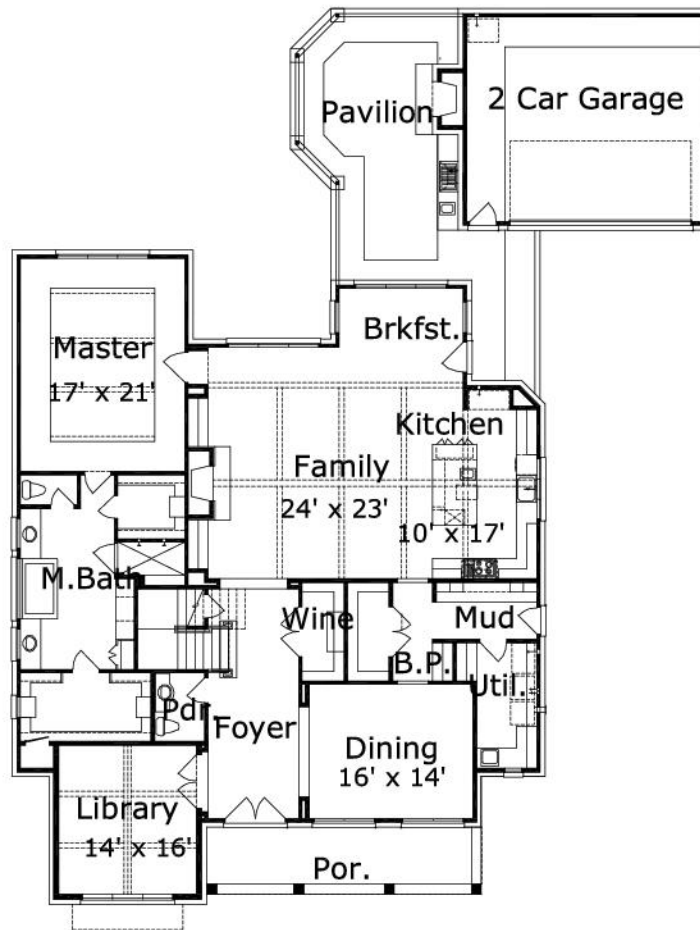
	First Floor	Other Floors	Other Features	
<b>Square Footage</b>	2,848	1,648	Butler Pantry	Cov'd. Pavilion
<b>Master Bedroom</b>	X		Foyer	Wine Closet
<b>Dining Room</b>	X			
<b>Living Room</b>	X			
<b>Family Room</b>	X			
<b>Game Room</b>		X		
<b>Study</b>	X			
<b>Guest Room</b>		X		

**Garage(s)** 2 car, Front Load, Straight In  
**Stairs**

## Rivers 4473 : Front Elevation



## Rivers 4473 : Floor 1



## Rivers 4473 : Floor 2

