

Abbydale 3675.1 : Details

AS LOW AS \$250
FULLY CUSTOMIZABLE &
PROFESSIONALLY DESIGNED

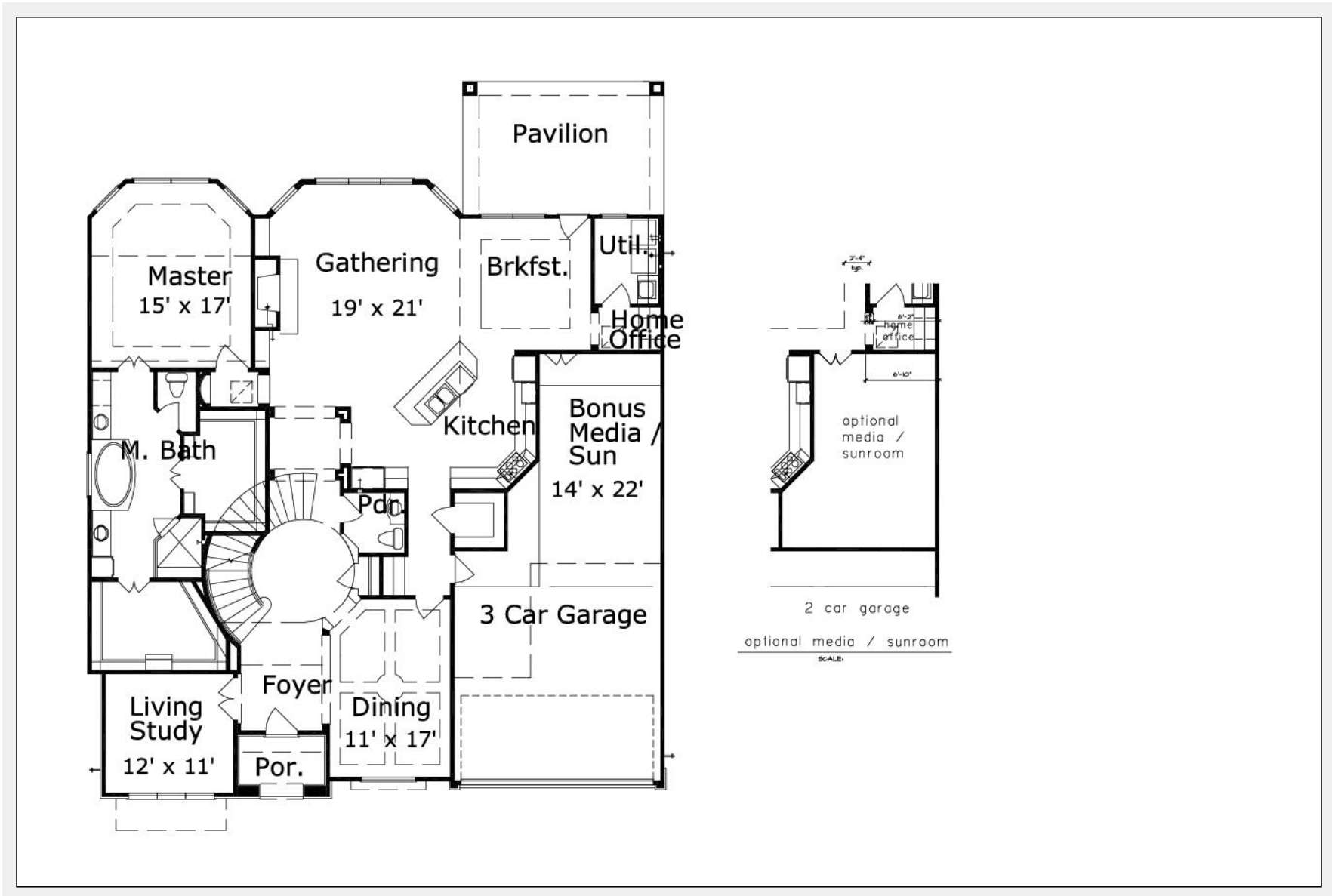
Style	Traditional
Exterior Material	Stucco
Bedrooms	4
Bathrooms	3 / 1
Total Living Sq Ft	3,675
Total Covered Sq Ft	4,675
Dimensions (w x d x h)	54' 0" x 69' 0" x 33' 9"

	First Floor	Other Floors	Other Features	
Square Footage	2,261	1,414	Cov'd. Front Porch	Foyer
Master Bedroom	X		Home Office	Master Down
Dining Room	X		Playroom	Sunroom
Living Room	X			
Study	X			
Garage(s)	3 car, Front Load, Straight In			
Stairs	Curved			

Abbydale 3675.1 : Front Elevation



Abbydale 3675.1 : Floor 1



Abbydale 3675.1 : Floor 2

