

Amesbury 3134.2 : Details

AS LOW AS \$250
FULLY CUSTOMIZABLE &
PROFESSIONALLY DESIGNED

Style	Duplex/Townhouse
Exterior Material	Stucco
Bedrooms	4
Bathrooms	4 / 1
Total Living Sq Ft	3,134
Total Covered Sq Ft	3,815
Dimensions (w x d x h)	21' 0" x 73' 6" x 43' 5"

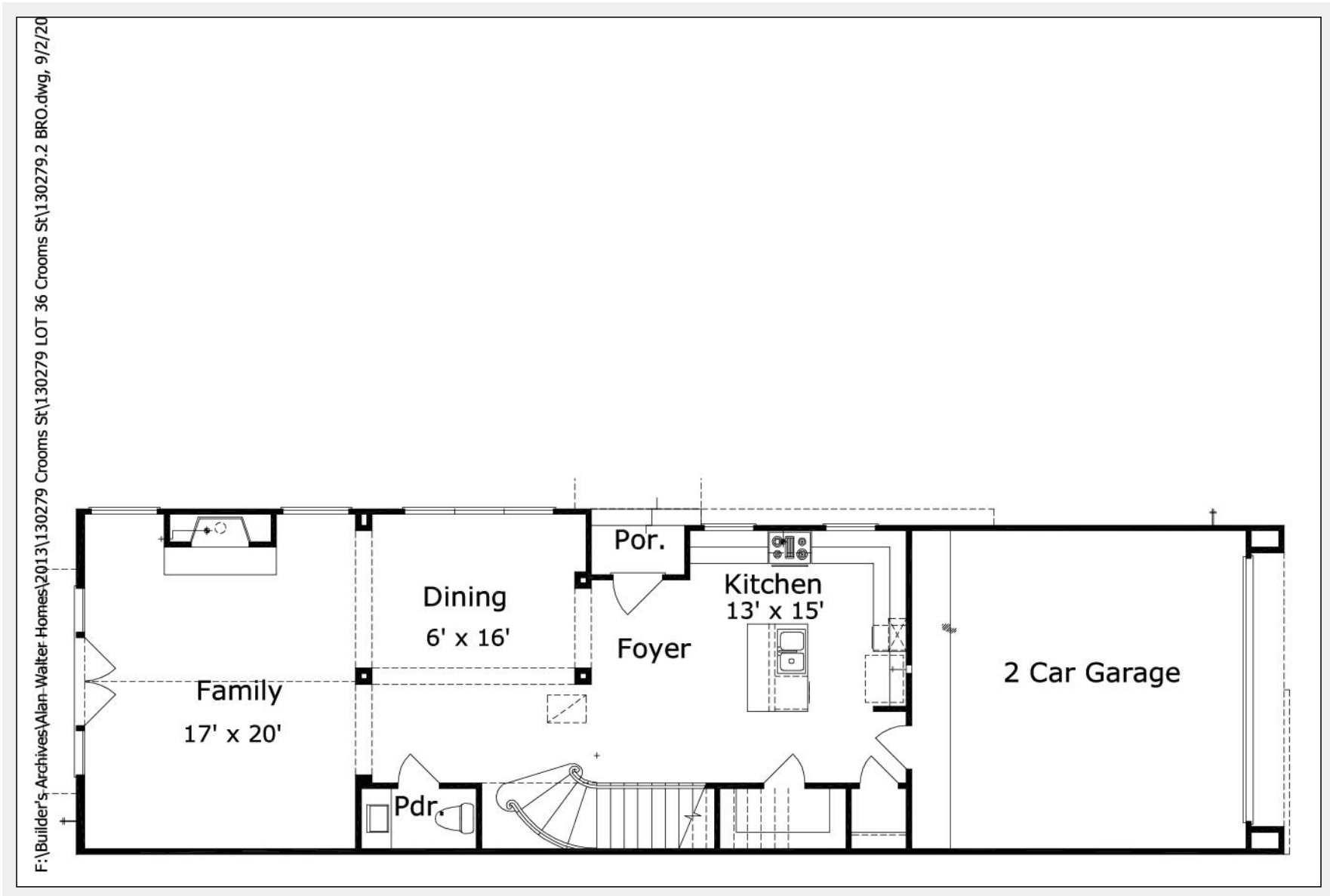
	First Floor	Other Floors	Other Features	
Square Footage	1,031	2,103	2 Story Study	Bar
Master Bedroom		X	Cov'd. Front Porch	Ext. Balcony
Dining Room	X		Foyer	Master Up
Family Room	X			
Game Room		X		
Study		X		
Guest Room		X		

Garage(s)	2 car, Side Load, Straight In
Stairs	Standard (2 flights)

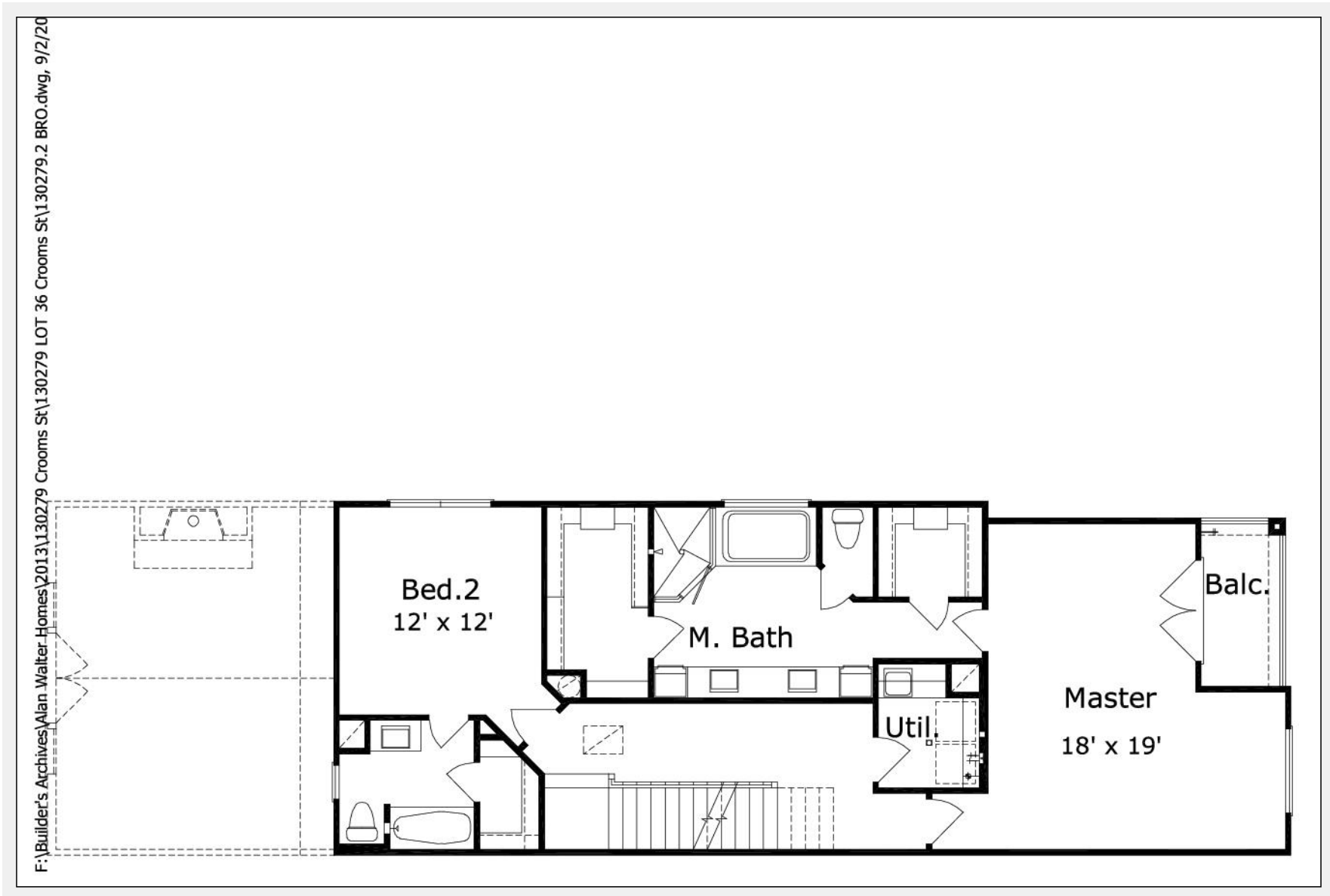
Amesbury 3134.2 : Front Elevation



Amesbury 3134.2 : Floor 1



Amesbury 3134.2 : Floor 2



Amesbury 3134.2 : Floor 3

