

## Maple Lakes 3341.2 : Details

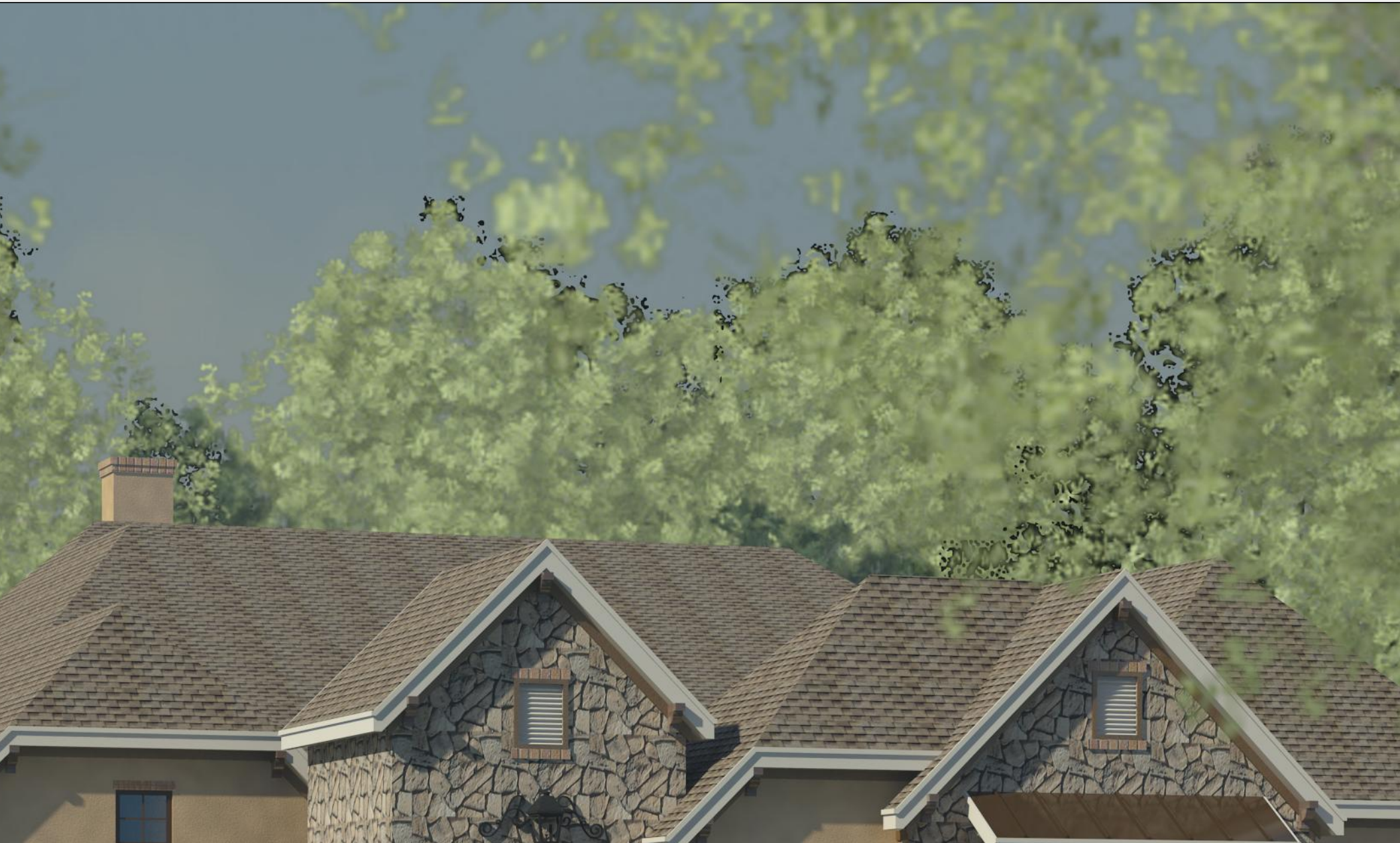
**AS LOW AS \$250**  
**FULLY CUSTOMIZABLE &**  
**PROFESSIONALLY DESIGNED**

<b>Style</b>	Country French
<b>Exterior Material</b>	Stone & Stucco
<b>Bedrooms</b>	4
<b>Bathrooms</b>	2 / 1
<b>Total Living Sq Ft</b>	3,341
<b>Total Covered Sq Ft</b>	5,192
<b>Dimensions (w x d x h)</b>	62' 0" x 90' 0" x 27' 5"

	First Floor	Other Floors	Other Features	
<b>Square Footage</b>	3,341	0	Butler Pantry	Casita
<b>Master Bedroom</b>	X		Courtyard	Cov'd. Front Porch
<b>Dining Room</b>	X		Foyer	Home Office
<b>Living Room</b>	X		Outdoor Fireplace	Outdoor Kitchen
<b>Family Room</b>	X			
<b>Study</b>	X			
<b>Guest Room</b>	X			

**Garage(s)** 2 car, Front Load, Straight In  
**Stairs**

## Maple Lakes 3341.2 : Front Elevation



## Maple Lakes 3341.2 : Floor 1

