

## Copland 5023 : Details

**AS LOW AS \$250**  
**FULLY CUSTOMIZABLE &**  
**PROFESSIONALLY DESIGNED**

<b>Style</b>	Mediterranean/Tuscan
<b>Exterior Material</b>	Stucco & Cultured Stone
<b>Bedrooms</b>	4
<b>Bathrooms</b>	3 / 1
<b>Total Living Sq Ft</b>	5,023
<b>Total Covered Sq Ft</b>	6,748
<b>Dimensions (w x d x h)</b>	62' 0" x 82' 8" x 27' 7"

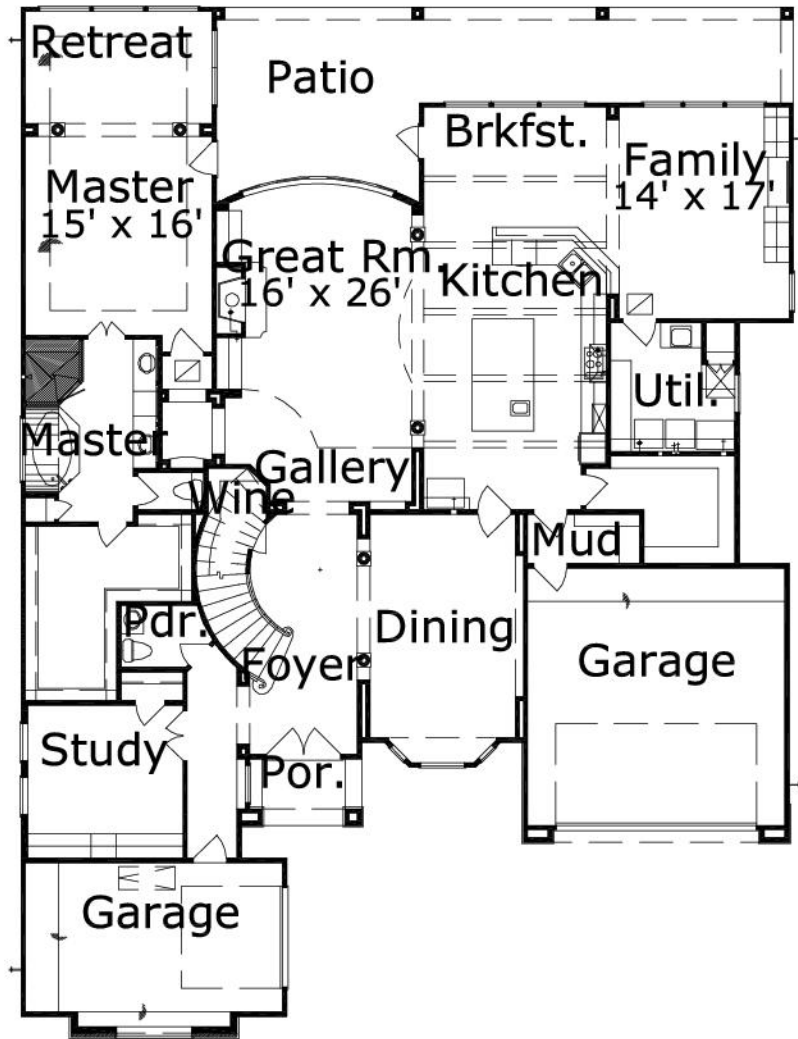
	First Floor	Other Floors	Other Features	
<b>Square Footage</b>	3,010	2,013	2 Story Living	Bar
<b>Master Bedroom</b>	X		Cov'd. Front Porch	Cov'd. Rear Porch
<b>Dining Room</b>	X		Foyer	Gallery
<b>Living Room</b>	X		Int. Balcony	
<b>Family Room</b>	X			
<b>Game Room</b>		X		
<b>Study</b>	X			
<b>Guest Room</b>		X		
<b>Home Theater</b>		X		

<b>Garage(s)</b>	1 car, Front Load, Swing (Entry Facing)
<b>Stairs</b>	Curved

## Copland 5023 : Front Elevation



## Copland 5023 : Floor 1



## Copland 5023 : Floor 2

