

## Hopvine 5069.1 : Details

**AS LOW AS \$250**  
**FULLY CUSTOMIZABLE &**  
**PROFESSIONALLY DESIGNED**

<b>Style</b>	French
<b>Exterior Material</b>	Brick and Stone
<b>Bedrooms</b>	4
<b>Bathrooms</b>	4 / 2
<b>Total Living Sq Ft</b>	5,069
<b>Total Covered Sq Ft</b>	6,550
<b>Dimensions (w x d x h)</b>	70' 0" x 97' 6" x 36' 3"

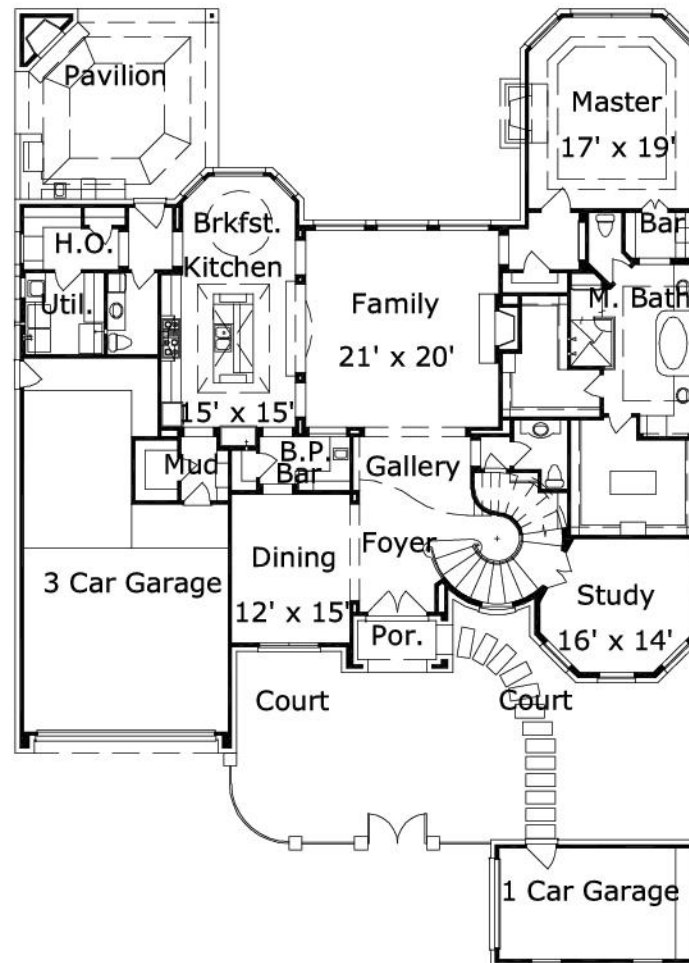
	First Floor	Other Floors	Other Features	
<b>Square Footage</b>	2,998	2,071	Bar	Butler Pantry
<b>Master Bedroom</b>	X		Courtyard	Cov'd. Pavilion
<b>Dining Room</b>	X		Foyer	Gallery
<b>Living Room</b>	X		Home Office	Int. Balcony
<b>Family Room</b>	X		Mud Entry	Outdoor Fireplace
<b>Game Room</b>		X	Outdoor Kitchen	Theater/Media
<b>Study</b>	X			
<b>Guest Room</b>		X		
<b>Home Theater</b>		X		

<b>Garage(s)</b>	4 car, Front Load, Split
<b>Stairs</b>	Spiral

## Hopvine 5069.1 : Front Elevation



# Hopvine 5069.1 : Floor 1



## Hopvine 5069.1 : Floor 2

