

## The Saulthaus 4170: Details

**AS LOW AS \$250**  
**FULLY CUSTOMIZABLE &**  
**PROFESSIONALLY DESIGNED**

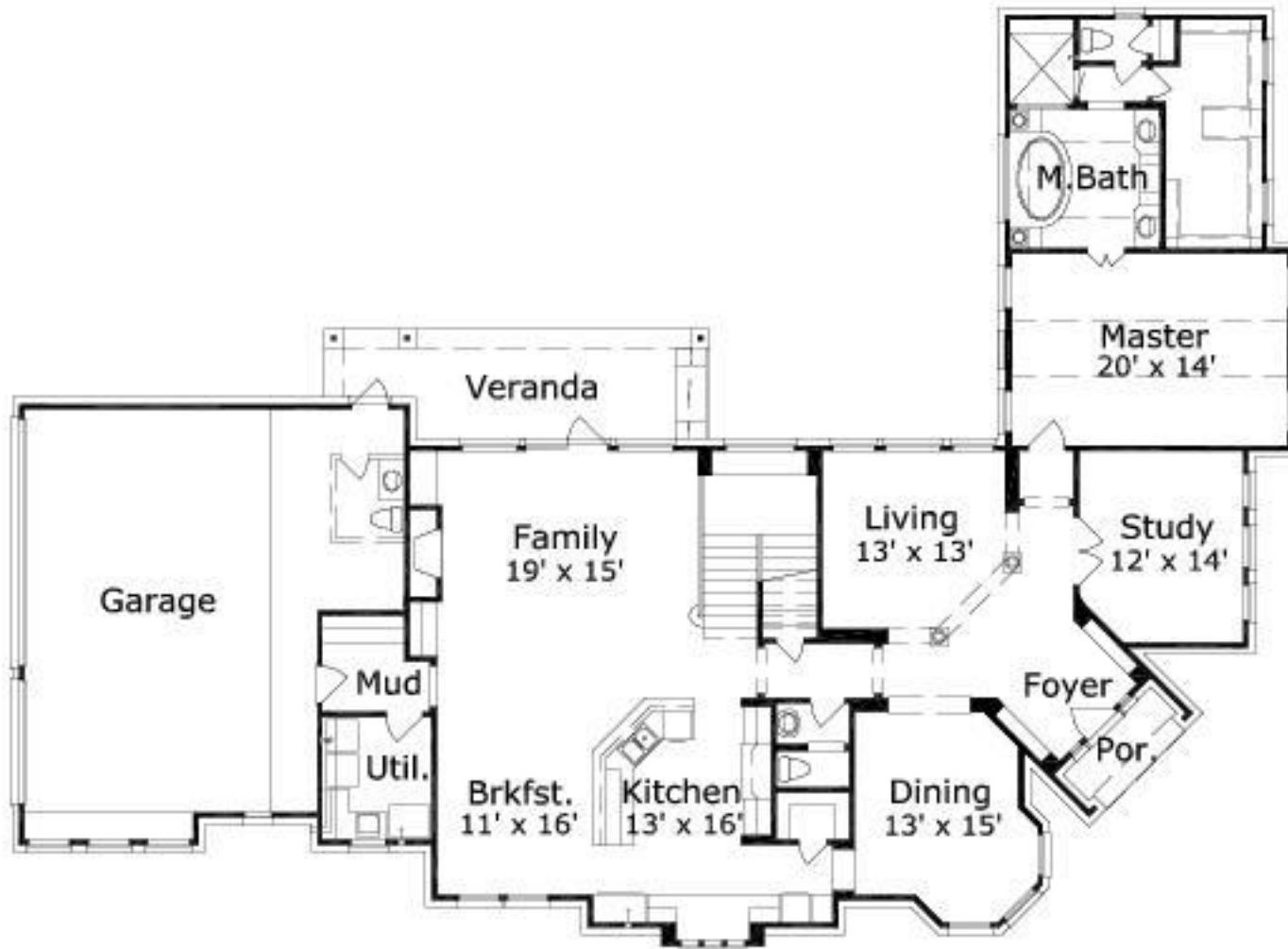
<b>Style</b>	Traditional
<b>Exterior Materials</b>	Brick
<b>Bedrooms</b>	4
<b>Bathrooms</b>	4 / 1
<b>Total Living Sq Ft</b>	4,170
<b>Total Covered Sq Ft</b>	5,564
<b>Dimensions (w x d x h)</b>	93'8" x 68'2" x 38'6"

	First Floor	Other Floors	Other Features
<b>Square Footage</b>	2,546	1,624	Bonus Room
<b>Bedrooms</b>	1	3	Computer Alcove
<b>Ceiling Heights</b>	10'0"	9'0"	Corner Lot
<b>Master Bedroom</b>	X		Covered Rear Porch
<b>Dining Room</b>	X		Master with Sitting Area
<b>Living Room</b>	X		Optional Pool Bath
<b>Family Room</b>	X		
<b>Game Room</b>		X	
<b>Study</b>	X		
<b>Guest Room</b>		X	
<b>Garage(s)</b>	Side Load Straight In		
<b>Stairs</b>	Standard		

## The Saulthaus 4170: Front Elevation



## The Saulthaus 4170: Floor 1



## The Saulthaus 4170: Floor 2

