

The Palm Grove 3397 : Details

AS LOW AS \$250
FULLY CUSTOMIZABLE &
PROFESSIONALLY DESIGNED

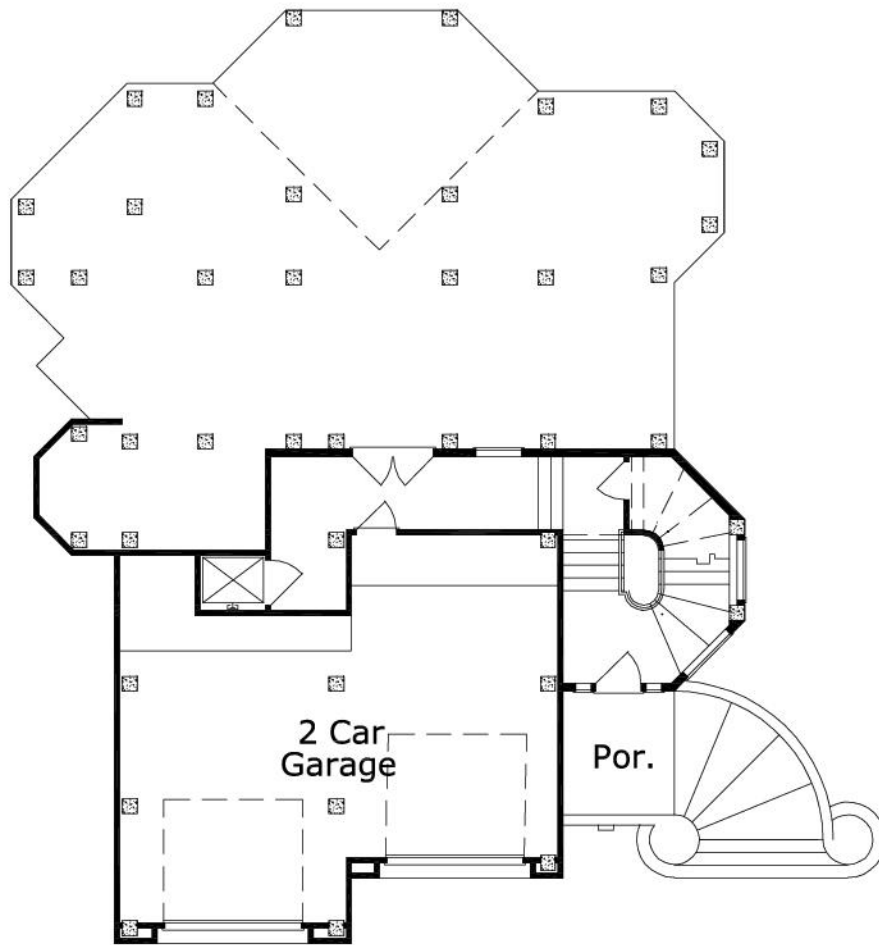
Style	Beach House
Exterior Material	Stucco
Bedrooms	2
Bathrooms	3 / 0
Total Living Sq Ft	3,397
Total Covered Sq Ft	5,479
Dimensions (w x d x h)	48' 6" x 61' 8" x 43' 3"

	First Floor	Other Floors	Other Features	
Square Footage	335	3,062	Cov'd. Terrace	Dock Side Veranda
Master Bedroom		X	Ext. Balcony	Foyer
Dining Room		X	Master w/Sitting	Optional Elevator
Family Room		X	Sep. Master Closet	Terrace
Study		X	Tile Roof	Unfinished Storage
Guest Room		X		
Garage(s)	2 car, Front Load, Straight In			
Stairs	Spiral (2 flights)			

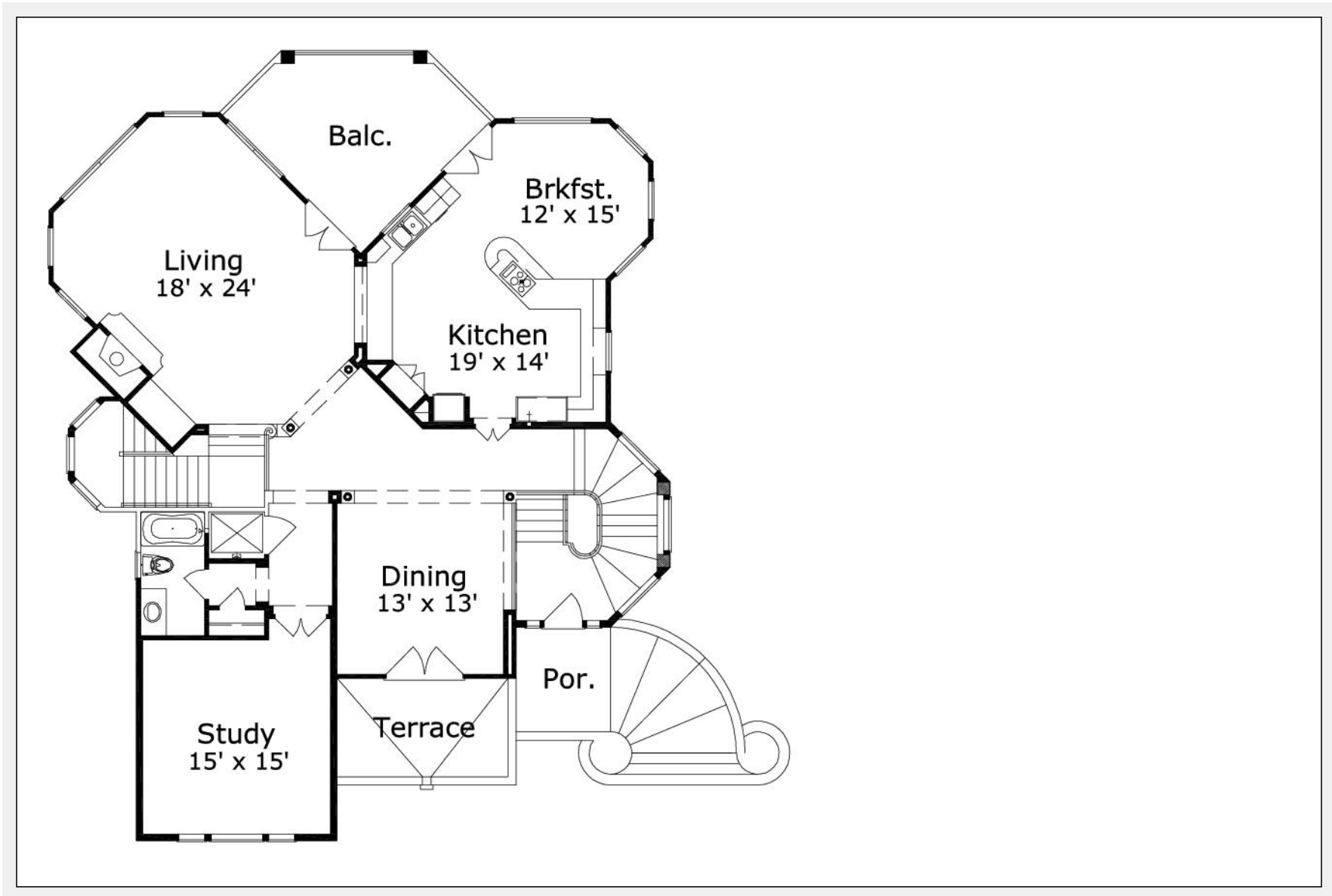
The Palm Grove 3397 : Front Elevation



The Palm Grove 3397 : Floor 1



The Palm Grove 3397 : Floor 2



The Palm Grove 3397 : Floor 3

