

## The South Hampton 4480: Details

**AS LOW AS \$250**  
**FULLY CUSTOMIZABLE &**  
**PROFESSIONALLY DESIGNED**

<b>Style</b>	Contemporary
<b>Exterior Materials</b>	Stone & Stucco
<b>Bedrooms</b>	4
<b>Bathrooms</b>	4 / 1
<b>Total Living Sq Ft</b>	4,480
<b>Total Covered Sq Ft</b>	5,393
<b>Dimensions (w x d x h)</b>	48'0" x 78'0" x 33'3"

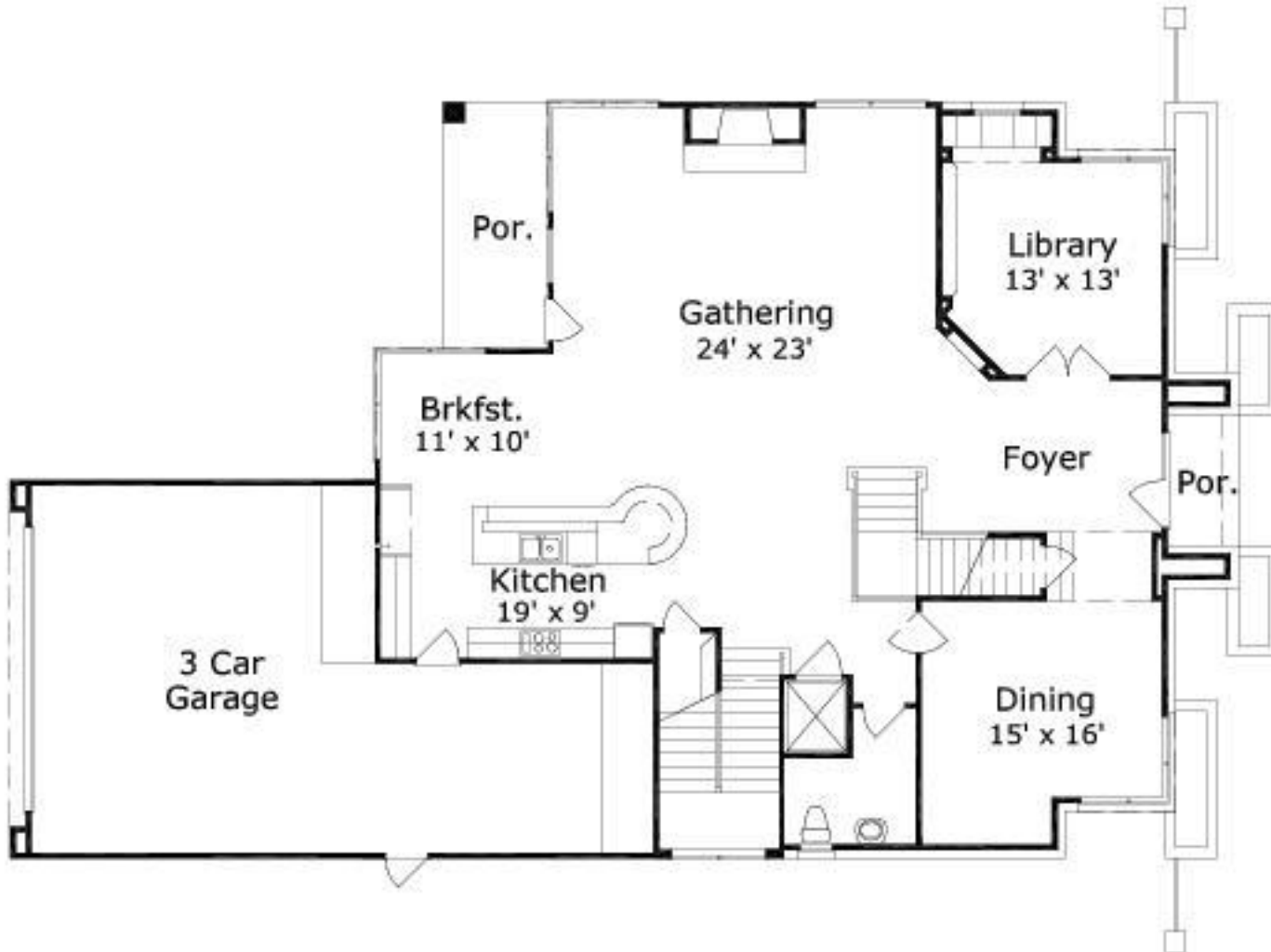
	First Floor	Other Floors	Other Features
<b>Square Footage</b>	2,004	2,823	Bonus Room Theater/Media
<b>Bedrooms</b>	0	4	Computer AlcoveUnfinished Storage
<b>Ceiling Heights</b>	10'0"	9'0"	Covered Rear Porch
<b>Master Bedroom</b>		X	Foyer
<b>Dining Room</b>	X		Gallery
<b>Family Room</b>	X		Home Office
<b>Study</b>	X		Interior Balcony
<b>Guest Room</b>		X	Master Fireplace
			Master with Sitting Area
			Optional Elevator
			Separate Master Closet

<b>Garage(s)</b>	Rear Load Straight In
<b>Stairs</b>	Standard

## The South Hampton 4480: Front Elevation



## The South Hampton 4480: Floor 1



## The South Hampton 4480: Floor 2



## The South Hampton 4480: Floor 3

